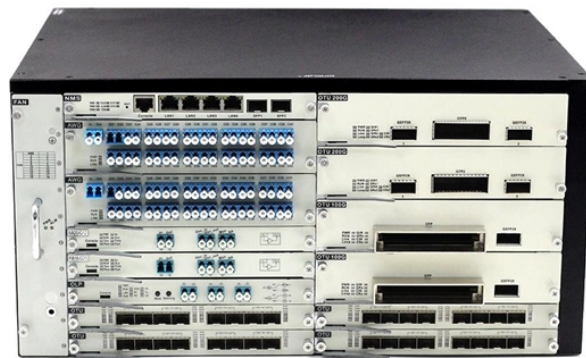


Cable Management Process for Signal Tower Cable Trays



Overview

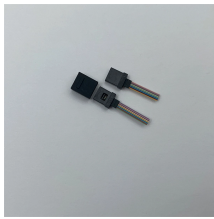
Installation of Cable in Cable Trays involves precise routing on support systems, NEC/IEC compliance, grounding, ampacity derating, bend radius control, segregation of services, fire safety, labeling, and reliable cable management for industrial and commercial. Installation of Cable in Cable Trays involves precise routing on support systems, NEC/IEC compliance, grounding, ampacity derating, bend radius control, segregation of services, fire safety, labeling, and reliable cable management for industrial and commercial. Cable trays serve as a vital part of modern electrical systems, providing support for cables, pipelines, and other infrastructure. Properly managing cables in these trays ensures the smooth functioning of electrical systems, minimizes downtime, improves maintenance efficiency, and guarantees. , is a welded wire-mesh cable management system made of high-strength steel wire. It is used to manage cables for light B manufactures its cable tray in a range of materials with a variety of finishes. The mechanical and electrical characteristics, tests, certifications, overall quality management, recommendations mentioned. Tangled and Disorganized Cables Usually, a tangled web of cables results from cables introduced during

expansions without re-evaluation or routed without a predetermined strategy. This work is licensed under the Creative Commons Attribution-Noncommercial-NoDerivs 3. You are free to share this work (copy, distribute and transmit) under the following conditions: you must give credit to the ITER Organization, you cannot use the work.

Cable Management Process for Signal Tower Cable Trays



This publication is intended as a practical guide for the proper and safe* installation of cable ladder systems, cable tray systems, channel support systems and ...



When fitting cable trays and their accessories, the products are cut on site to create changes of direction, adjust sections, etc. Damage can also occur during handling; as a result, both the ...



This article explores the best practices and essential principles involved in cable classification and management within trays, helping professionals ensure the reliability and safety of ...



Cable tray layout must take into consideration the design limits of the cable. To minimize damage and verify integrity after installation, follow the practices outlined in cable handling and ...



In industrial settings, electrical and instrumentation (E& I) cable trays or bridge racks play a critical role in organizing and supporting power, control, and signal cables across facilities.



This comprehensive guide investigates the most frequent wire management challenges faced in real-world setups and demonstrates how the correct cable tray accessories may address them.



Cable tray sections must be in accordance with the cable types and/or the number of cables installed in it, respecting the maximum filling ratio, according to the cable tray type.



Cable tray length is selected based on the load to be supported, the distance between the supports (also referred to as the span), and handling and installation constraints.



Some applications may require the cable tray to support the weight of a single, dead object in addition to the cable loads. Specifications typically require this to be applied at the midpoint of the span between ...



Master network cable management with this complete guide. Learn best practices, tools, and tips to keep your setup organized, efficient, and easy to maintain.



As an industry leader in cable tray, Eaton offers one of the widest ranges of B-Line series cable management solutions in a variety of styles, materials and finishes to support virtually any industrial ...

Contact Us

For more information, pricing, or custom data center solutions, please contact us:

Website: <https://www.yoahorroenergia.es>

Email: hello@yoahorroenergia.es

Phone: +233 54 318 7269

Address: Plot 28, Spintex Road, Accra, Greater Accra, Ghana

This document is for informational purposes only. Specifications subject to change without notice.

