

Busbar in High Voltage Switchgear



Busbar in High Voltage Switchgear



Eaton's Power Xpert UX system in double busbar configuration is designed for your most critical applications up to 24kV and delivers increased flexibility, reliability and safety.



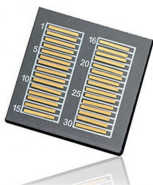
In high-voltage (HV), extra-high-voltage (EHV), and outdoor medium-voltage (MV) systems, bare busbars and connectors are typically used, with conductors available in tubular or stranded-wire ...



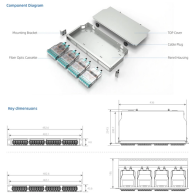
A busbar is a metallic bar or strip—typically copper or aluminum—mounted inside switchgear/switchboards to distribute high currents. Flat profiles maximize surface area for cooling ...



Looking for a safe, efficient, and standards-compliant busbar solution for your switchgear project? Our engineering team can help you choose the right materials, layout, and design based on ...



A: Key components of high voltage switchgear include circuit breakers, bus bars, insulation systems, and enclosures. Each component plays a critical role in the operational integrity and safety ...



It is lack of relatively perfect scheme for the design of 10kV large-current switchgear above 4000A, in particular with many problems on selection and design of



This article serves as a definitive guide, exploring the technical supremacy of rigid busbar architecture and why it is the inevitable future for high-performance switchgear.



Switchgear Busbar Design switchgear busbar sizing busbar current rating temperature rise switchgear short time withstand IEC 62271 IEC 61439 IEC 60076 Power distribution FAQ What ...



Avoid certification failures and costly redesigns. This guide compares IEC, ANSI, and GB busbar standards with real project cases and compliance tools.



Electrical busbars are solid conductors used to carry and distribute high current in switchgear, panels, substations, and power systems. This guide explains how busbars work, ...



A busbar is a metallic bar or strip—typically copper or aluminum—mounted inside switchgear/switchboards to distribute high currents. Flat profiles maximize surface area for cooling ...

Contact Us

For more information, pricing, or custom data center solutions, please contact us:

Website: <https://www.yoahorroenergia.es>

Email: hello@yoahorroenergia.es

Phone: +233 54 318 7269

Address: Plot 28, Spintex Road, Accra, Greater Accra, Ghana

This document is for informational purposes only. Specifications subject to change without notice.

