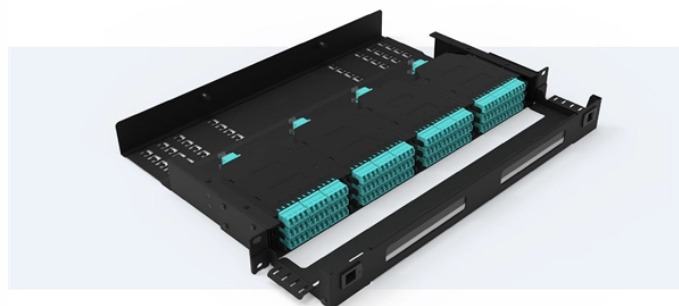


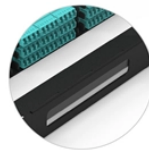
Burkina Faso manufacturer of explosion-proof electrical distribution boxes

Pre-Terminated Patch Panel

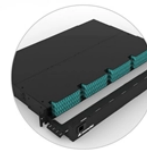
- Standard 19" width
- Max 144 fibers in 1U
- MPO/Fusion Dual-Purpose



Removable Cable Management Tray



Transparent Front Cover



High-Quality Matte Coated Steel

Overview

Warom specializes in manufacturing explosion-proof electrical equipment, with products covering explosion-proof lighting fixtures, explosion-proof distribution boxes, explosion-proof control equipment, explosion-proof motor switches, explosion-proof cable connectors, explosion-proof. Warom specializes in manufacturing explosion-proof electrical equipment, with products covering explosion-proof lighting fixtures, explosion-proof distribution boxes, explosion-proof control equipment, explosion-proof motor switches, explosion-proof cable connectors, explosion-proof. BARTEC designs and produces customer-specific (configure-to-order and engineer-to-order) solutions for optimum energy distribution in safety-critical industrial applications. You will benefit from a highly flexible solution tailored precisely to your application. To this end, our engineering team. Providing quality explosion-proof products to customers, and spreading national spirit to the world. Warom specializes in manufacturing explosion-proof. Our Products are designed to meet IECEx, ATEX, UL, and more Our products are tested to meet

the highest standards for safety in hazardous areas Since 1996, Ex Industries has been delivering industry-leading products, technical support, and application assistance to hazardous location markets. Extol International are the leading suppliers of Control Panels & Distribution Boards for hazardous areas and explosive atmospheres – a comprehensive range of.

Burkina Faso manufacturer of explosion-proof electrical distribution



Tengda Explosion-proof Technology Co., Ltd. produces explosion-proof distribution boxes, explosion-proof lighting distribution boxes, explosion-proof junction boxes, explosion-proof electrical control ...



Warom specializes in manufacturing explosion-proof electrical equipment, with products covering explosion-proof lighting fixtures, explosion-proof distribution boxes, explosion-proof control ...



EX Industries provides high-quality explosion proof electrical equipment and custom engineering solutions for hazardous environments. Certified, reliable, and built for safety.



According to the electric scheme and main technical parameters offered by user, select explosion-proof electrical equipments and, decide the outline dimensions of distribution board, to satisfy user's locale ...



The explosion-proof distribution box safely delivers power in hazardous zones (oil, gas, chemical plants) with rugged, spark-resistant casing—ATEX/IECEx, IP66 certified for reliable operation in explosive ...



Toutes les entreprises du Burkina Faso sur l'annuaire professionnel des sociétés Africaines: coordonnées, géolocalisation, rubriques d'activité, itinéraire, photos...



Founded in 2006, Elsewedy Steel, a subsidiary of Elsewedy Electric, is a leading manufacturer in the steel downstream and wire drawing industry. We deliver specialized, high-performance reinforcement ...



BARTEC offers one of the most extensive ranges of explosion-proof and substance-resistant components, devices, and systems for controlling, switching, and connecting for hazardous areas ...



Durable Hexlon Explosion Proof Distribution Boxes and Electrical Enclosures, IECEx and ATEX certified for Zone 1 and Zone 2.



These are available in a range of materials including Stainless Steel, GRP & Sheet Steel from IP42 (Indoor) to IP 66 (Outdoor) Applications.

Contact Us

For more information, pricing, or custom data center solutions, please contact us:

Website: <https://www.yoahorroenergia.es>

Email: hello@yoahorroenergia.es

Phone: +233 54 318 7269

Address: Plot 28, Spintex Road, Accra, Greater Accra, Ghana

This document is for informational purposes only. Specifications subject to change without notice.

