

Brazilian Trough-type Cable Tray Specifications



Brazilian Trough-type Cable Tray Specifications



Steel cable trays are fabricated from continuous roll-formed structural quality steel. By roll-forming steel, the mechanical properties are increased allowing the use of a lighter gauge steel to carry the ...



2.1 Cable tray systems shall be of the design of one manufacturer and shall be designed so that there are no burrs, projections, or sharp edges to damage cable insulation.



Our cable tray design considerations guide details key factors to consider when designing cable tray systems for industrial and commercial applications. Browse or download the cable tray catalog for ...



It is designed for mechanical support and strain relief in long runs of cable and creates a smooth gradual bend for cable. Rail and stringer material is 16 ga steel tubing.



The Brazil cable tray market is also segmented by type, including ladder type, trough, channel, single rail, and other specialized designs. Ladder type cable trays are widely adopted due to ...



V-Trough cable tray keeps cabling cool, protected and easy to manage. Its high-strength steel construction matches many European OEM specifications and is available in smaller sizes for control ...



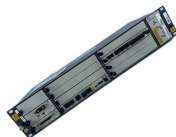
Our wind certification report provides you with list of acceptable B-Line series cable tray supports, fittings and covers based off of the environmental conditions, cable loading, and type of cable tray in your ...



A. Complete assembly of steel or aluminum (select one) cable tray system and necessary accessories shall be provided as shown on plans. Install entire cable tray system in accordance with all local ...



When fitting cable trays and their accessories, the products are cut on site to create changes of direction, adjust sections, etc. Damage can also occur during handling; as a result, both the ...



Straight sections and fittings provide the flexibility to allow cable ladder installations to follow cable runs which are either planned for new projects or already exist in buildings, as shown in the illustration right.

Contact Us

For more information, pricing, or custom data center solutions, please contact us:

Website: <https://www.yoahorroenergia.es>

Email: hello@yoahorroenergia.es

Phone: +233 54 318 7269

Address: Plot 28, Spintex Road, Accra, Greater Accra, Ghana

This document is for informational purposes only. Specifications subject to change without notice.

