

Belarusian Optical Cable Fault Locator NEMA4X Warranty



Overview

Anatel Corporation (the Seller) warrants to the Buyer that the replacement parts and/or labor supplied by the Seller will be free from defects of material and workmanship for 90 days from the date of shipment. Finding the location of an underground cable fault just became easier with the VM-510FFL+ Standalone A-frame locator. Seller's sole obligation under the foregoing warranties will be limited to either, at. Megger's cable testing and fault location solutions help you quickly identify faults other devices may miss, whether caused by damage, installation issues, or deterioration. Reduce downtime, lower costs, and maintain the security of your supply.

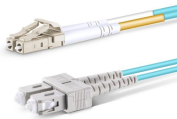
Belarusian Optical Cable Fault Locator NEMA4X Warranty



Used to verify continuity, test and find breaks in fiber links, locate pinched fiber strands in termination cabinets, or anywhere fiber optic cables are terminated and subject to mechanical damage.



90-DAY LIMITED HARDWARE WARRANTY EXCLUSIONS WARRANTY LIMITATION EXCLUSIVE REMEDIES Anatel Corporation (the Seller) warrants to the Buyer that the replacement parts and/or labor supplied by the Seller will be free from defects of material and workmanship for 90 days from the date of shipment. Seller's sole obligation under the foregoing warranties will be limited to either, at Seller's option, replacing or repairing defective good... See more on images. hach Megger



Following these clicks will quickly lead you to the exact location where electrical voltage is being lost to ground. The GFL3000™ is a low cost ground fault locator with features previously unavailable at this ...



We provide a comprehensive range of products tailored to every stage of fault location, including fault prelocation, pinpointing, cable tracing, and phase identification.



Struggling to identify faults, validate polarity or ensure quality mechanical connector terminations in your fiber optic cables? Visual Fault Locators (VFLs) are a valuable tool that make ...



After connecting a compatible transmitter to the line and placing it in a Fault-Find mode, use the simple to operate four button controls of the VM-510FFL+ to locate and stay on the cable path while ...



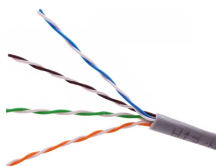
Used to verify continuity, test and find breaks in fiber ...



Anatel Corporation (the Seller) warrants to the Buyer that the replacement parts and/or labor supplied by the Seller will be free from defects of material and workmanship for 90 days from the date of shipment.



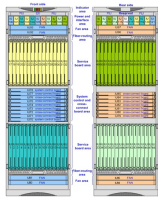
Fault locator in single mode fiber optic (SM) or multimode fiber optic ...



Fault locator in single mode fiber optic (SM) or multimode fiber optic (MM) connection cables of any installation. Compact and portable model ideal to check bad connections, breaks, excessive ...



Visual Fault Locator is a low-cost test tool for field technicians to find and identify fiber optic cable breaks quickly. How Does Visual Fault Locator Work? The light that transfers signals ...



Discover the AFL VFI4 Visual Fault Identifier, a compact and rugged tool designed for fiber optic technicians. With a 650 nm red laser, 10 km range, and universal connector compatibility, it quickly ...



This new VM-510FFL Standalone A-Frame locator can easily find the location of an underground cable fault with a compatible transmitter. There is no need for a separate utility locator with cables ...

Contact Us

For more information, pricing, or custom data center solutions, please contact us:

Website: <https://www.yoahorroenergia.es>

Email: hello@yoahorroenergia.es

Phone: +233 54 318 7269

Address: Plot 28, Spintex Road, Accra, Greater Accra, Ghana

This document is for informational purposes only. Specifications subject to change without notice.

