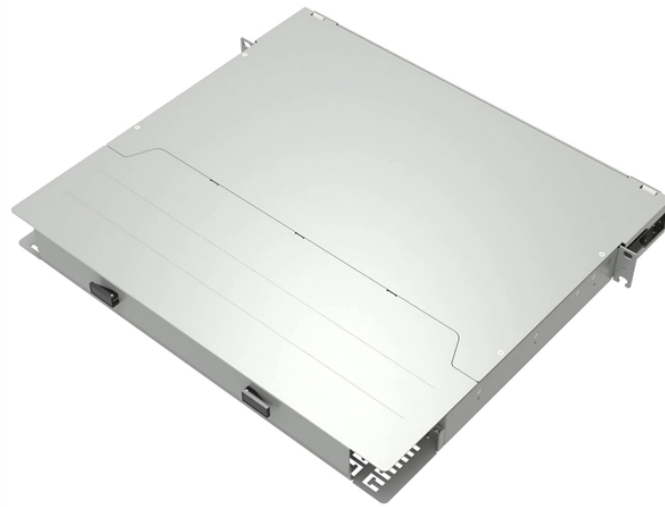


Backbone Network Grade Optical Core Router Anti-Electrical Tracking Selection Guide



Overview

The document describes the necessary hardware, software, management and general requirements that need to be fulfilled by a DOR compliant platform taking into consideration not only the current service providers needs when deploying core/backbone transport networks but also. The document describes the necessary hardware, software, management and general requirements that need to be fulfilled by a DOR compliant platform taking into consideration not only the current service providers needs when deploying core/backbone transport networks but also. The Routed Optical Networking solution aims to simplify networks by removing the complexities inherent to the infrastructure. This simplification allows service providers to leverage their assets more effectively by: Changing the paradigm, the Cisco Routed Optical Networking solution improves. Download our Enterprise and Carrier core product guides below. Corning products are available, compatible and easy to specify, purchase and install. We create innovative solutions, products and resources that work together to extend our customers' expertise in fiber

optics. Pluggable DCO transceivers provide detailed visibility of optical transport performance and fiber quality directly to the router (or host). Ethernet layer: business as usual. 400GE or 4x100GE breakout Optical channel:. The Open Optical & Packet Transport (OOPT) Project Group works on the definition of open technologies, architectures and interfaces in Optical and IP Networking.

Backbone Network Grade Optical Core Router Anti-Electrical Tracking



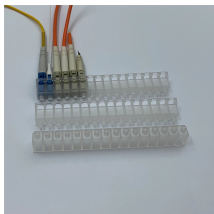
Start by identifying your capacity demands, application, and anticipated future growth. Identify solutions that are designed for your application like metro, long-haul, DCI or subsea. Look for open standards, ...



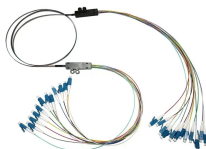
This helps achieve remote coverage and ubiquitous connections, bridge the digital divide, and provide basic network connections for various industries. This solution is applicable to national, state, and ...



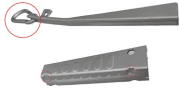
It concentrates on different parts of the Transport network architecture, including optical transponders, line systems, IP access devices, open APIs and network simulation and planning tools.



Moving forward, as a network professional you will need to learn how to operate these pluggable DCOs.



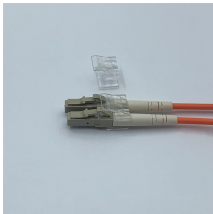
Are you ready to elevate your network's core routing capabilities and prepare your infrastructure for the demands of 5G and 400G networking? Explore detailed specifications, ...



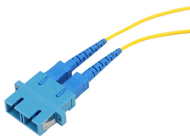
We recommend you review the FOA Guide sections on fiber optic installation covering basic fiber installation and OSP fiber installation. Designing a network requires working with other personnel ...



This document defines a proposal for the shift in the IP backbone architecture from monolithic chassis- based to a disaggregated Spine & Leaf architecture.



We distribute the line and fabric functions onto our core routers and interconnect them in a CLOS topology with cloud-native core and edge protocol software from our partners.



Both core product guides are available for download to the right, giving you instant access to the information you need, whenever you need it. If you have questions or would like to speak with a ...



Changing the paradigm, the Cisco Routed Optical Networking solution improves operational efficiency and reduces network TCO. The transformed network also increases service ...

Contact Us

For more information, pricing, or custom data center solutions, please contact us:

Website: <https://www.yoahorroenergia.es>

Email: hello@yoahorroenergia.es

Phone: +233 54 318 7269

Address: Plot 28, Spintex Road, Accra, Greater Accra, Ghana

This document is for informational purposes only. Specifications subject to change without notice.

