

Austrian Instrumentation Cable Tray Construction



Austrian Instrumentation Cable Tray Construction



Starting with process analysis and development of the solution concept, as well as the subsequent engineering process, the Rohrer Group is a reliable partner. Thanks to highly qualified employees ...



Step-by-step instrumentation cable tray installation guide with safety tips, standards, inspections, and downloadable Excel checklist.



Installing instrument cable trays properly and in compliance with relevant standards is crucial to ensure safety, functionality, and durability. Below is a detailed guide on how to design and install cable trays ...



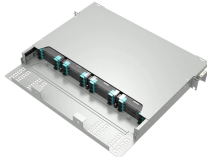
Instrument layout includes overall cable tray routing, instrument and junction box locations. Other deliverables are hook diagrams, cable schedules, wiring diagrams, and material take-offs. The ...



Instrument layout includes overall cable tray routing, instrument and junction box locations. Other deliverables are hook diagrams, cable schedules, wiring ...



Cable tray length is selected based on the load to be supported, the distance between the supports (also referred to as the span), and handling and installation constraints.



This document lists the most typical mistakes that EPC teams should not make while installing instrumentation cable trays to make sure the plant runs smoothly, is safe, and is in ...



Fabricated in numerous styles (wiremesh, ladder, ventilated trough, channel, and solid-bottom) and sizes, cable tray provides the greatest versatility among cable support systems, while offering ...



Four different mesh cable tray types are available, depending on the requirements, area of application and cable quantity. The innovative Magic connection system of the GRM and G-GRM mesh cable ...



Explore all types of cable trays—ladder, perforated, basket, solid, and channel. Learn their uses, materials, pros, cons, and key differences.



The I-beam design is the most common cable tray construction. Our aluminum, I-beam ladder cable trays feature 3-inch tangents and are using connectable with our fittings and accessories.

Contact Us

For more information, pricing, or custom data center solutions, please contact us:

Website: <https://www.yoahorroenergia.es>

Email: hello@yoahorroenergia.es

Phone: +233 54 318 7269

Address: Plot 28, Spintex Road, Accra, Greater Accra, Ghana

This document is for informational purposes only. Specifications subject to change without notice.

