

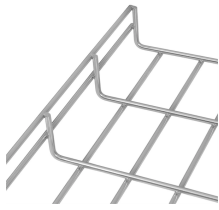
Are industrial switches useful in the UK



Overview

Nowadays, industrial switch plays a vitally important role in various industries like energy, environmental protection, transportation, smart city surveillance, etc. And the demand for industrial switches is also increasing. This leaflet is aimed at owners and operators of electrical switchgear in industrial and commercial organisations with little electrical knowledge or expertise available in-house. Commonly used in factories, warehouses, workshops, construction sites and agricultural buildings, these. Rugged, easy-to-deploy switches that are certified to be reliable even in extreme environments. Fast ring failover protection of <math><20</math> milliseconds for critical operations. Endurance certifications for vibration, shock, and free-fall to keep your network resilient and running. The right choice of industrial plugs and sockets UK safeguards uptime, compliance, and on-site safety across plants, workshops, and temporary power systems in 2025, ensuring operations keep moving without electrical interruptions. With a wide range of options available, understanding.

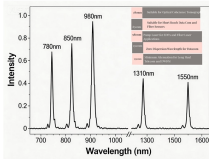
Are industrial switches useful in the UK



Explore various types of instrumentation switches used in industrial automation, including pressure, level, flow, and temperature switches. Learn how these switches work, where they are ...



This leaflet is aimed at owners and operators of electrical switchgear in industrial and commercial organisations with little electrical knowledge or expertise available in-house.



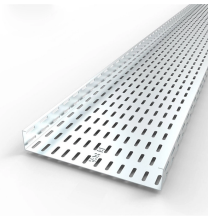
Choose the right industrial plugs and sockets UK. See heavy duty plugs and sockets, IP ratings, and where to buy switches and sockets online.



Guidance on the regulations as they apply to equipment being supplied in or into Great Britain.



This article explains the basics of industrial switches, including what an industrial switch is, the characteristics of industrial switches, and their applications.



We source products from trusted manufacturers to support everything from small-scale integration to large industrial applications. Industrial switches are critical components in automated systems, used ...



Industrial switches play an important part in Smart Cities as they can be deployed in more places to enable connectivity. Download our resellers guide to find out more about this and how to get involved ...



Whether used to control individual machines, isolate circuits for servicing, or manage power to entire sections of an installation, industrial switches are built for performance and longevity. Their robust ...



With a wide range of options available, understanding the differences between these switches is crucial for making an informed decision. This article explores the various types of industrial switches, their ...



All switches are designed for industrial use, with features like DIN-rail mounting, extended temperature ranges and support for key protocols like PROFINET and Modbus TCP.

Contact Us

For more information, pricing, or custom data center solutions, please contact us:

Website: <https://www.yoahorroenergia.es>

Email: hello@yoahorroenergia.es

Phone: +233 54 318 7269

Address: Plot 28, Spintex Road, Accra, Greater Accra, Ghana

This document is for informational purposes only. Specifications subject to change without notice.

