

## Are fiber optic distribution boxes and splitter boxes the same



### Overview

Although they all belong to the optical distribution and management system, their functions, applications, and product selection logic are very different. Integrates fiber termination, splicing, distribution, and especially PLC optical splitter installation. In modern FTTH (Fiber to the Home) and optical communication networks, three types of fiber distribution products are widely used: Splitter Distribution Box, ODF (Optical Distribution Frame), and Fiber Terminal Box. What is the difference between these fiber boxes.



## Are fiber optic distribution boxes and splitter boxes the same



ODF, Splitter Distribution Box, and Fiber Terminal Box are not interchangeable, but complementary components of an FTTH network. ODF ensures efficient backbone fiber ...



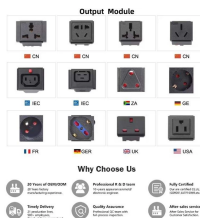
Learn what FDT and splitter are and how they differ from each other in FTTH networks. Find out their advantages, disadvantages, and how to choose them.



While a fiber optic termination box serves a single user or only a limited number of users (less than five), a Fiber Distribution Box is designed to provide fiber access for multiple users.



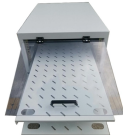
Fiber splitters and fiber distribution terminals (FDTs) play vital but distinct roles. While both aid in signal distribution, they have unique features and applications.



These devices, also known as fiber optic splicing closures, are crucial for maintaining the integrity of fiber optic connections, whether situated outdoors in harsh environmental conditions or indoors ...



Introduction In modern FTTH and FTTx networks, several types of fiber management hardware ensure reliable optical connectivity from the central ...



A cassette optical splitter is usually installed in the termination and distribution fiber box. Only a small number of fiber boxes use the box type optical splitters.



The size of the fiber optics splitter box is between the optical termination box and path panels, 24 port and 48 ports are the most common. It is mainly installed in the corridor and is ...



ODF, Splitter Distribution Box, and Fiber Terminal Box are not interchangeable, but complementary components of an FTTH network. ODF ...



Introduction In modern FTTH and FTTx networks, several types of fiber management hardware ensure reliable optical connectivity from the central office to the end user. Fiber closure ...

## Contact Us

For more information, pricing, or custom data center solutions, please contact us:

Website: <https://www.yoahorroenergia.es>

Email: [hello@yoahorroenergia.es](mailto:hello@yoahorroenergia.es)

Phone: +233 54 318 7269

Address: Plot 28, Spintex Road, Accra, Greater Accra, Ghana

This document is for informational purposes only. Specifications subject to change without notice.

