

Aluminum Alloy Connection Box



Aluminum Alloy Connection Box



Aluminum Alloy Junction Boxes. Customer focused design for all applications and environments. Known for ease of installation and service.



What Is Aluminum? Aluminum is a silver-colored metal that is relatively lightweight and corrosion-resistant compared to other common metals. It's an important material because of its ...



LeMotech Electrical Box, Aluminum Alloy Metal Junction Box, IP67 Waterproof Dustproof Project Box, Outdoor Universal Enclosure, Grey 5.9x3.9x3.1in (150x100x80mm)



This advisory affects all regions. April 2026 U.S. Section 232 update: the White House raises tariffs on aluminum, steel, and copper imports, expanding duty scope and enforcement. Learn ...



Choose from our selection of aluminum junction boxes, including over 225 products in a wide range of styles and sizes. Same and Next Day Delivery.



Our premium aluminum sheet and plate products are available in several alloys, including 6061, 5052, and 3003, to meet your exact project specifications. Aluminum sheet and plate products offer an ...



Aluminum, chemical element, a lightweight silvery white metal of Group 13 of the periodic table. Aluminum is the most abundant metallic element in Earth's crust and the most widely used ...



Statistics and information on the worldwide supply of, demand for, and flow of the mineral commodity aluminum.



Aluminum Terminal and Junction Boxes The unique features of aluminum make it ideal for protecting electrical equipment in the right applications Aluminum is a lightweight material resulting in an ...



Die-cast aluminium boxes from Raychem RPG. IP66 for general factory wiring protection.



Aluminum is the most abundant metal in the earth's crust and is equally abundant in our everyday life—from kitchen foil to beverage cans to airplanes to automobiles.



Description The JBE1 junction boxes are designed for tap, splice or connecting of conductors for control, instrument or power circuit. These boxes are designed for explosive atmospheres zone 1, 2 and zone ...



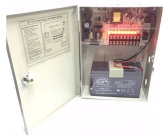
Aluminium is found on Earth primarily in rocks in the crust, where it is the third-most abundant element after oxygen and silicon, rather than in the mantle, and virtually never as the free metal. It is obtained ...



Find your aluminum junction box easily amongst the 115 products from the leading brands (ORTAC, SENSOCAR, KROMA MEC, ...) on DirectIndustry, the industry specialist for your professional ...



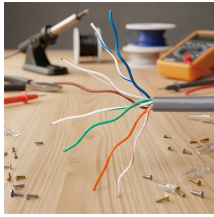
[DURABLE CONSTRUCTION] Aluminum alloy material is highly resistant to corrosion, making these junction boxes ideal for outdoor. Also sturdy enough to have a longer lifespan, reducing the need for ...



Aluminum provides a balance of weight, corrosion resistance, manufacturability, and recyclability across industrial applications. What is Aluminum? Aluminum is a lightweight metallic ...



Description The JBE1 junction boxes are designed for tap, splice or connecting of ...



The aluminium terminal box range, HALP, with a IP 66, 67 protection degree, is available off the shelf in many different sizes. The HALP range is well suited for indoor and outdoor environments thanks to ...



IP65 protection class and impact resistant diecast aluminium terminal junction box. Diecast aluminum box has superior heat dissipation, heat resistance, and oil resistance compared to plastic boxes.



Aluminum sheet and aluminum plate can be applied to a variety of applications, including automotive, construction, furniture, appliances, and more. We offer aluminum sheet for sale from a thickness of ...



Discover what aluminium is, how it's made from smelting to finishing, and a complete guide to all 36 types and series (1000 to 7000). Learn about alloys like 6061, 5052, and 2024 for your ...

Contact Us

For more information, pricing, or custom data center solutions, please contact us:

Website: <https://www.yoahorroenergia.es>

Email: hello@yoahorroenergia.es

Phone: +233 54 318 7269

Address: Plot 28, Spintex Road, Accra, Greater Accra, Ghana

This document is for informational purposes only. Specifications subject to change without notice.

