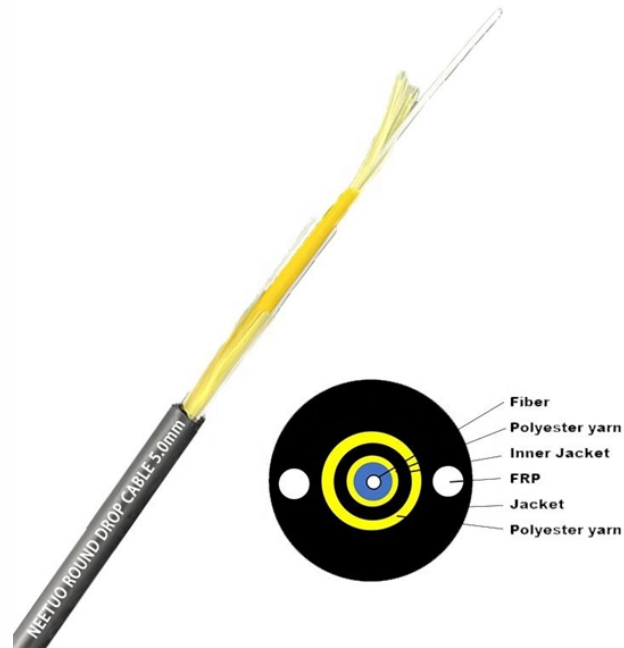


# Aluminum Alloy Cable Tray Specifications and Dimensions



## Aluminum Alloy Cable Tray Specifications and Dimensions



The 7" Side Rail PW Aluminum Ladder Cable Tray supports 100 lbs over a 30 ft span, offering unmatched load capacity and strength for heavy industrial applications—upgrade your setup today.



Equipped with a removable **Mounting Plate** inside the enclosure, enabling customized drilling and secure component mounting.

All Hubbell aluminum cable trays are classified by Underwriters Laboratories as suitable for use as equipment grounding conductors per NEC 392 and are certified by UL to meet all requirements of ...



Aluminum Cable Tray, Series 2, 3, 4 & 5. • Side Rails. Our I-Beam - the most efficient structural shape . Using “Copper-free” 6063-T6 Aluminum Alloy • Rungs- provide system integrity . The rungs can ...



Hot Products Electric Control System

Values are based on simple beam tests per NEMA VE 1 on 36" wide cable tray with rungs spaced on 12" centers. Cable trays will support, without collapse, a 200 lb. (90.7 kg) concentrated load over and ...



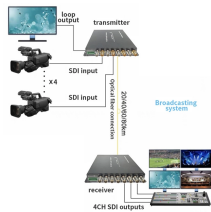
Even though a 900 mm wide tray has six (6) times the volume of a 150 mm wide tray, it cannot carry any more cable weight. When piling cable in tray, the required air separation between cables can be ...



An aluminum alloy cable tray is a lightweight, durable, and cost-effective system used to support and organize electrical and data cables. It is typically made from ...



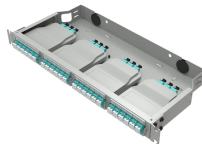
The aluminum cable tray is a lightweight, durable, and cost-effective solution used for organizing and safely carrying electrical and data cables. With easy installation and strong corrosion resistance, it is ...



The document provides detailed specifications for aluminum cable trays, including features, accessories, material compliance, and load ratings. It outlines various applications in commercial and industrial ...



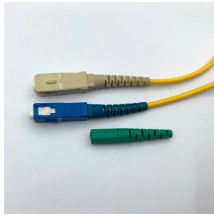
All calculations and data for AH3-7 and AH4-7 series are based on 42" wide cable tray with rungs spaced on 12" centers with tray supported as simple spans with deflection measured at the midpoint.



Cope aluminum swage ladder tray offers superior rigidity and easy cable installation for high vibration environments.



Below is a detailed breakdown of common aluminum alloy cable tray types, their compositions, key features, and recommended applications.



Cable tray shall be installed according to the latest revision of NEMA VE 2. Materials and Finish: Straight section and fitting side rails and rungs shall be extruded from Aluminum Association Alloy 6063. All ...

## Contact Us

For more information, pricing, or custom data center solutions, please contact us:

Website: <https://www.yoahorroenergia.es>

Email: [hello@yoahorroenergia.es](mailto:hello@yoahorroenergia.es)

Phone: +233 54 318 7269

Address: Plot 28, Spintex Road, Accra, Greater Accra, Ghana

This document is for informational purposes only. Specifications subject to change without notice.

