

Airport-grade Transimpedance Amplifier QSFP Selection Guide

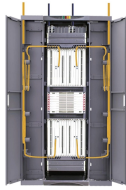


Overview

This article will introduce the technical features and differences of 400G OSFP/QSFP-DD/QSFP112 modules, presenting the FS 400G module product list and application scenarios to meet various deployment needs. Transimpedance amplifiers (TIAs) act as front-end amplifiers for optical sensors such as photodiodes, converting the sensor's output current to a voltage. TIAs are conceptually simple: a feedback resistor (RF) across an operational amplifier (op amp) converts the current (I) to a voltage (VOUT). Accelink pluggable amplifiers are a series of EDFAs that support hot plug and are compatible with various pluggable small form factor standards, such as XFP/CFP/CFP2/QSFP28/QSFP-DD/OSFP. The product has compact size, excellent optical parameter and built-in control circuit, which can be directly. We provide an industrial-grade reference framework, complying with the latest MSA (Multi-Source Agreement) updates, including SFF-8679 Rev 1. 4 (Jan 2025), to help you design robust, scalable optical fabrics. The Master Reference Matrix: SFP vs. & SHENZHEN, China- (BUSINESS WIRE)-Sep. 5, 2023- Credo Technology Group Holding Ltd (NASDAQ: CRDO), an innovator. We offer both the DWDM-100G-Q28-120 and the DWDM2-100G-Q28-80, and

we also frequently get a lot of questions regarding these modules, their differences, and their specifications. So we decided to compare both of these modules. On the path to the 400G era, different form factors act as distinct engines, delivering.

Airport-grade Transimpedance Amplifier QSFP Selection Guide



In this article, you will find all of the right answers to your questions. You're here to find out which 100G DWDM2 QSFP28 80 or 100G DWDM ...



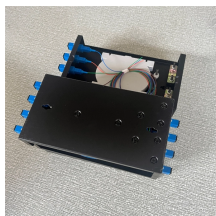
Highly integrated low power NRZ/PAM4 digitally assisted transceiver technology with sophisticated calibration and self-test features. Ideal ...



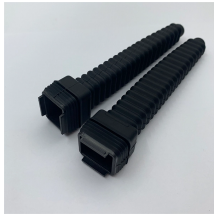
Impressive Low-Power TIA, combined with Credo DSPs and Laser Drivers, creates a complete optical chipset solution for Hyperscale Data Centers ...



Accelink pluggable amplifiers are a series of EDFAs that support hot plug and are compatible with various pluggable small form factor standards, such as XFP/CFP/CFP2/QSFP28/QSFP-DD/OSFP.



Learn how to choose QSFP-DD transceivers for 400G/800G networks, including reach, compatibility, power, and breakout options.



The definitive guide to SFP, QSFP, and QSFP-DD standards for 2025. Compare 400G/800G optics, understand PAM4 complexity, and master QSFP-DD vs OSFP deployment ...



This article explores the technical characteristics, product lineup, and use cases of 400G OSFP/QSFP-DD/QSFP112 modules to choose the most ...



Below is a vendor-neutral, engineering-grade breakdown of the common QSFP+ Modules optical types. Each sub-type includes the technical approach, typical wavelengths, connector style, and ...



Choosing the right amplifier requires an understanding of the relationship between an amplifier's GBP, the desired transimpedance gain and closed-loop bandwidth, and the input and feedback capacitances.



July 11, 2019 - QSFP-DD Hardware Specification for QSFP DOUBLE DENSITY 8X PLUGGABLE TRANSCEIVER - Rev 5.0 May 8, 2019 - Common Management Interface Specification - Rev 4.0

Contact Us

For more information, pricing, or custom data center solutions, please contact us:

Website: <https://www.yoahorroenergia.es>

Email: hello@yoahorroenergia.es

Phone: +233 54 318 7269

Address: Plot 28, Spintex Road, Accra, Greater Accra, Ghana

This document is for informational purposes only. Specifications subject to change without notice.

