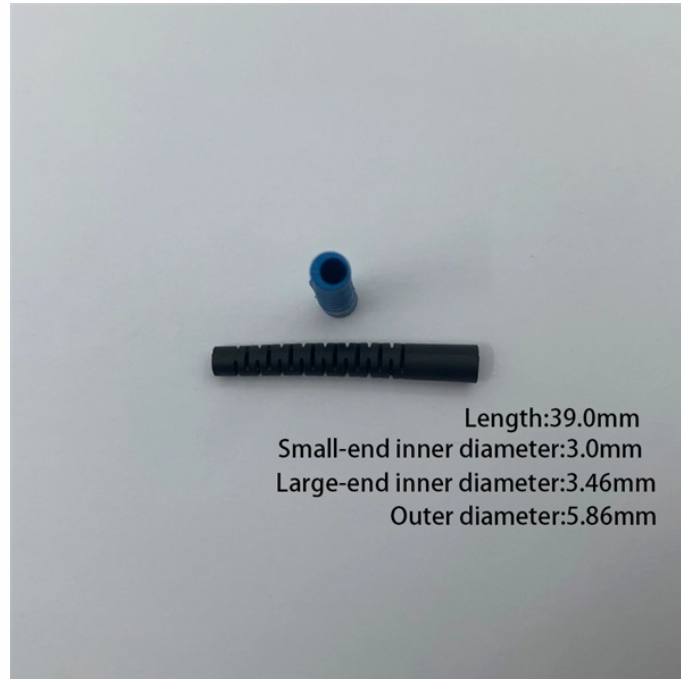


After-sales service for SD-WAN device QSFP28



After-sales service for SD-WAN device QSFP28



In this case, QSPTEK engineers created a 10 Gigabit Ethernet and POP Test Platform Solution by using an OTN managed chassis system. Provide IPRO with a flexible and precise platform to test ...



Buy FORTIGATE-7030E-QSFP28 SD-WAN SERVICE BUNDLE (SDWAN UNDERLAY & APPLICATION MONTI) at SHI. See detailed specifications and benefit from expert support. Shop IT ...



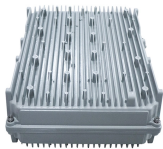
The Secure SD-WAN Ordering Guide is a complete reference for choosing and ordering Fortinet SD-WAN solutions. It is designed to support a wide range of deployment needs—from small branch ...



This document covers the step-by-step procedures required to use OaaS to deploy the Fortinet Secure SD-WAN solution to a single SD-WAN region and configure a geo-redundant, dual hub architecture.



Backup Your Controller
Run An Aura Check
Ensure Send to Controllers/Send to Vbond Is Done
Verify Disk Space on Vsmart and Vbond
If cloud-hosted, confirm the latest backup is done or initiate a backup of config db as mentioned in the next step.
If on-prem, take a config-db backup and VM snapshot of the controllers.
See more on cisco
Published: Oct 13, 2023
Missing: After-sales service
Must include: After-sales service.
`.sb_doct_txt{color:#4007a2;font-size:11px;line-height:21px;margin-right:3px;vertical-align:super}.b_dark`
`.sb_doct_txt{color:#82c7ff}`Fortinet



VMware includes hardware replacement services with each purchase of a VMware VeloCloud SD-WAN™ Edge device.



This document describes the process to upgrade the Software-defined Wide Area Network (SD-WAN) Controllers.



This service is designed to support SD-WAN underlay and application-focused operations, helping enterprise teams maintain policy consistency across branch, campus, and data center connectivity.



The return merchandise authentication (RMA) process enables you to replace either failed or malfunctioning SD-WAN devices with new or reused functional SD-WAN devices at a branch or a ...



Consider the session as a "cookbook" for SD-WAN policy failures, but not a "Tour de Force." The session primarily focuses on centralized policies, but I will also briefly discuss localized policies. Main ...



There is a QSFP28 breakout module that supports ten physical 10 Gb Ethernet ports. On assemblies that support these breakout variants, the front panel cages are modeled as connectors instead of as ...

Contact Us

For more information, pricing, or custom data center solutions, please contact us:

Website: <https://www.yoahorroenergia.es>

Email: hello@yoahorroenergia.es

Phone: +233 54 318 7269

Address: Plot 28, Spintex Road, Accra, Greater Accra, Ghana

This document is for informational purposes only. Specifications subject to change without notice.

