

ATC optical module



Overview

Our Active Transceiver Cooler (ATC) line of miniature form factor Peltier units are designed to work with optical transceivers. The thermoelectric cooler uses a high temperature solder construction. It is designed to accommodate the footprint of an EMI cage that goes around the. KT&C offers a broad selection of thermal and HD block cameras, including global shutter and rolling shutter modules, as well as encoder solutions for industrial, security, surveillance, and machine vision applications. From LWIR thermal imaging (384x288, 640x480) for low-light or. The KT&C ATC-UZ5707U-M 7x Zoom 4K Global Shutter MIPI Block Camera is a multi-output (MIPI CSI-2 / CVBS) zoom block module with a compact footprint and mighty processing power. It features a 1/1" SONY Progressive Scan Global Shutter CMOS sensor, Mechanical Day & Night modes, 84x AF Zoom (7x optical). The KT&C ATC-HZ5530Z-LPN features a 1/2. 58MP resolution (1456 x 1088 pixels) and supports 720p video output at frame rates of 60, 50, 30, and 25 fps. It boasts a 300x AF Zoom capability (25x optical and 12x digital) with a focal length. An optical transceiver is a small form factor (SFP) pluggable transceiver, see image below. The transceiver contains a laser diode that converts data into light signals and vice versa,

enabling high-speed data transmission at far distances.

ATC optical module



Includes global and rolling shutter modules, 7x-40x optical zoom, and LVDS/IP/HD-SDI outputs. Ideal for security, industrial, UAV, and machine vision applications.



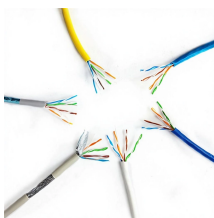
It features a 1/1" SONY Progressive Scan Global Shutter CMOS sensor, ...



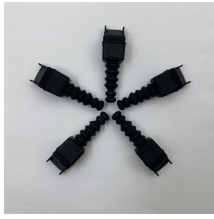
It features a 1/1" SONY Progressive Scan Global Shutter CMOS sensor, Mechanical Day & Night modes, 84x AF Zoom (7x optical zoom, 12x digital zoom), True WDR, and up to 2160p@30fps digital ...



These camera modules are designed to satisfy the specific needs of aerial photography, surveillance, and other applications where lightweight, small, and high-performance imaging ...



These OEM zoom block cameras can integrate into most OEM applications. Useful for fixed-position security and indoor/outdoor perimeter surveillance, the KT& C Block Cameras are versatile, powerful, ...



Discover the AstrOptix AI Carrier Board (AstrOptix AI Platform) with onboard LVDS to MIPI CSI-2 Conversion, designed to seamlessly integrate the KT& C ATC-HZ5540T-LP 40x optical zoom ...



Our Active Transceiver Cooler (ATC) line of miniature form factor Peltier units are designed to work with optical transceivers. The thermoelectric cooler uses a high temperature solder construction. It is ...



It boasts a 300x AF Zoom capability (25x optical and 12x digital) with a focal length ranging from 5.0mm to 150mm and an aperture of F1.6 to F4.3, ensuring superior low-light performance with a minimum ...



This cutting-edge camera module is the perfect solution for various applications, including security systems, drones, and more. With its powerful 40x zoom capability and full HD 1080p resolution, this ...



Type: AF Optical zoom lens (DC Iris), IR Corrective
 Focal Length: $f=4.25\text{mm}\sim 170\text{mm}$ F-value: F1.6
 (W) ~ 4.95 (T) Angle of View: H 56.33° (W) $\sim 1.59^\circ$
 (T), V 43.59° (W) $\sim 1.21^\circ$ (T)



The KT& C ATC-HZ5230Z-LCN camera module delivers high-performance imaging with a 1/2.8" progressive scan CMOS sensor, achieving a 2.13MP resolution at 1080P60. With a 30x AF optical ...



It boasts a 300x AF Zoom capability (25x optical and 12x digital) with a focal ...

Contact Us

For more information, pricing, or custom data center solutions, please contact us:

Website: <https://www.yoahorroenergia.es>

Email: hello@yoahorroenergia.es

Phone: +233 54 318 7269

Address: Plot 28, Spintex Road, Accra, Greater Accra, Ghana

This document is for informational purposes only. Specifications subject to change without notice.

