

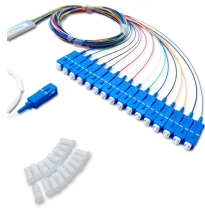
## AI Server Models



## AI Server Models



Perplexity is a free AI-powered answer engine that provides accurate, trusted, and real-time answers to any question.



Discover how Google AI is committed to enriching knowledge, solving complex challenges and helping people grow by building useful AI tools and technologies.



Learn what AI servers are and how they power artificial intelligence. Complete guide to AI server components, architecture, and requirements for ML and AI.



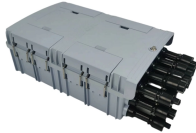
AI/ML demands are reshaping servers. Explore how CPUs, GPUs, FPGAs and AI accelerators drive performance for workloads like deep learning and predictive analytics.



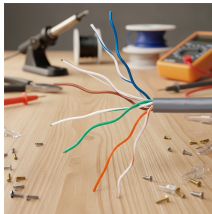
Meet Gemini, Google's AI assistant. Get help with writing, planning, brainstorming, and more. Experience the power of generative AI.



Chat with the most advanced AI to explore ideas, solve problems, and learn faster.



I compared the top 18 AI platforms for applications like content, automation, voice, analytics, and support. Explore the features, pricing, and use cases.



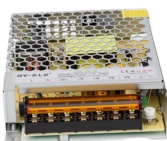
Compare the best AI models in 2026 across APIs and open weights. Find the right model for coding, agents, multimodal apps, and scale.



Microsoft Copilot is your companion to inform, entertain and inspire. Get advice, feedback and straightforward answers. Try Copilot now.



Whether you're deploying AI in your business, tinkering with a project, or just want to understand the tech shaping our world, this guide discusses what goes into AI server architecture, ...



A practical guide to self-hosting AI models on your own infrastructure. Covers hardware requirements, VRAM and quantisation, model selection for 2026, cost comparisons with cloud APIs, ...



Whether you are a hobbyist, a professional artist, or a developer integrating AI into your product, DeepAI delivers advanced technology with new video, music, and voice chat features.



Network Engineer and tech enthusiast NetworkChuck has provided a fantastic tutorial on how he built an AI server to run locally and provide large language model processing for affordable AI...



We believe our research will eventually lead to artificial general intelligence, a system that can solve human-level problems. Building safe and beneficial AGI is our mission.



Learn how to design high-performance model serving systems with the right inference engines, APIs, hardware, scaling, and monitoring for enterprise AI workloads.



AI servers support different execution patterns depending on how and where AI workloads are run. The primary distinction between server types is based on whether they are optimized for training, ...



Artificial intelligence (AI) is the capability of computational systems to perform tasks typically associated with human intelligence, such as learning, reasoning, problem-solving, perception, and decision ...



Explore key considerations for AI servers and how to design them to support AI workloads optimally.



Discover how you can unlock AI across your organization with solutions from HPE. Deliver the right combination of performance and scalability for AI workloads with HPE AI Servers built for AI training, ...

## Contact Us

For more information, pricing, or custom data center solutions, please contact us:

Website: <https://www.yoahorroenergia.es>

Email: [hello@yoahorroenergia.es](mailto:hello@yoahorroenergia.es)

Phone: +233 54 318 7269

Address: Plot 28, Spintex Road, Accra, Greater Accra, Ghana

This document is for informational purposes only. Specifications subject to change without notice.

