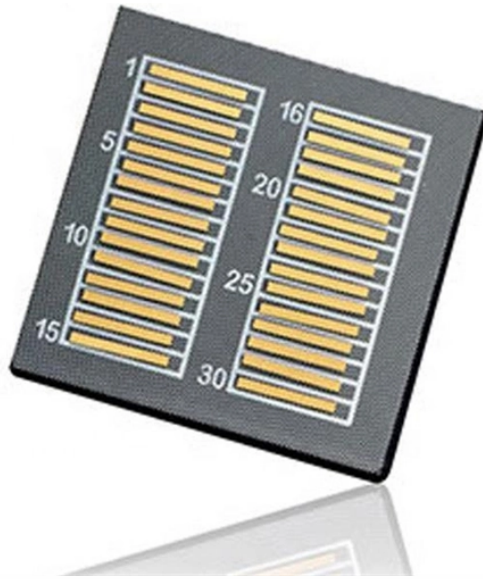


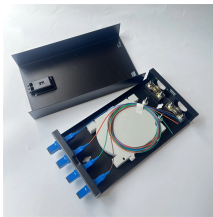
55 cable tray with a 45-degree bend



55 cable tray with a 45-degree bend



To create a 45-degree bend, cut the side rails to remove a segment calculated by the formula $(\tan(22.5^\circ) \times \text{Width})$. Alternatively, use a pre-fabricated 45-degree fitting with a radius sufficient for your ...



This bend provides a 45° angle bend when connecting cable tray sections.



The cable tray products are designed for use in numerous commercial and industrial applications. Available in standard and bespoke sizes with various finish options.



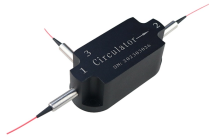
Attach Cable Trays to Cable Tray Supports and connect to other Cable Trays with splice clamps to form continuous system. Adjust height of each Cable Tray Support and correct height if necessary. ...



Pre-galvanized steel fitting 5 inches side rail height 30 inches width ventilated horizontal bend 45 degree 48 inches radius For more info visit: [electrification .abb](http://electrification.abb)



Compact fiberglass 45 degree horizontal bend fitting for Cope cable tray systems—pre-drilled for easy installation.



Shop Cope I-BEAM ladder tray 45 degree bend for reliable NEMA cable tray installations.



We offer a variety of cable tray flat bends available for light, medium, and heavy duty cable tray systems in varying sizes to suit your requirements.



By B-Line (Eaton) (6A-36-45HB12 HRZ BND) At Graybar, Your Trusted Resource For Cable Tray And Other B-Line (Eaton) Products.



Item #: 0014946 CAT #: CT44EFC45SS UPC: 783510157678 Category: 45° Horizontal Cable Tray Bend Made in USA \$ 274.11 EA Company wide:



This 45-degree horizontal cable tray bend is constructed from copper-free aluminum with a swaged connection for easy installation. It complies with NEMA Class 12B standards, providing robust cable ...

Contact Us

For more information, pricing, or custom data center solutions, please contact us:

Website: <https://www.yoahorroenergia.es>

Email: hello@yoahorroenergia.es

Phone: +233 54 318 7269

Address: Plot 28, Spintex Road, Accra, Greater Accra, Ghana

This document is for informational purposes only. Specifications subject to change without notice.

