

21-position distribution box specifications





Overview

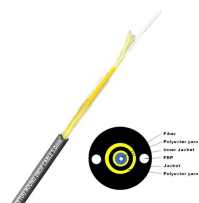
This publication contains the following new or updated information. This list includes substantive updates only and is not intended to reflect all changes.





21-position distribution box specifications

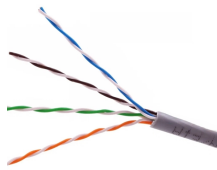
	<p>XL-21 Low Voltage Power Distribution Panel supports 630A current, certified to IEC60439 & GB standards. Ideal for industrial power plants, substations, and high-rise buildings with IP3X/IP40 ...</p>
---	---

	<p>The XL-21 Low-Voltage Power Distribution Cabinet plays a critical role in modern electrical systems, ensuring the efficient distribution of power across various applications. This ...</p>
---	--

	<p>This comprehensive guide delves into the specifications and standards of the XL-21 power distribution cabinet, providing valuable insights for engineers, facility managers, and electrical ...</p>
--	--

	<p>The Fulleto XL-21 series is an indoor, floor-standing power distribution cabinet engineered for excellence. It serves as the central hub for receiving and distributing electrical energy in low-voltage ...</p>
---	---

	<p>The main distribution box adopts self-design of new components, compact structure, beautiful appearance, easy maintenance, a variety of wiring options for users to choose, it is an ideal ...</p>
---	---



DC Micro Style Distribution Boxes Four-pin, One Signal per Port Cable Connector Distribution Box Eight-port DC Micro Distribution Box Specifications



Eaton's range of power distribution assemblies not only provides you optimum power distribution and motor control functionalities, they meet your most demanding requirements for safety and flexibility.



The XL-21 type power distribution cabinet is suitable for power plants and industrial enterprises. It is designed for three-phase three-wire, three-phase four-wire, and three-phase five-wire systems with ...



Confused by switchgear codes? Compare GGD, GCK, GCS, MNS, and XL-21 low-voltage switchgear. Learn the differences in design, application, ...



The XL-21 Low-Voltage Power Distribution Cabinet plays a critical role in modern electrical systems, ensuring the efficient distribution of power ...



The Fulleto XL-21 series is an indoor, floor-standing power distribution cabinet engineered for excellence. It serves as the central hub for receiving and ...



Midwest offers a full line of terminal boxes for 240-volt, single-phase and 600-volt, three-phase ratings.



Suitable for use in power systems with AC 50Hz, rated working voltage of 380V, rated current of 630A and below, as power distribution, lighting distribution, and power control.



Designed for AC frequency of 50Hz, this electrical distribution switchgear operates at rated voltages of 400V or 660V with a rated current of 630A. Additionally, it supports three-phase three-wire, four-wire, ...

Contact Us

For more information, pricing, or custom data center solutions, please contact us:

Website: <https://www.yoahorroenergia.es>

Email: hello@yoahorroenergia.es

Phone: +233 54 318 7269

Address: Plot 28, Spintex Road, Accra, Greater Accra, Ghana

This document is for informational purposes only. Specifications subject to change without notice.

