

1MWh Battery Cabinet Solution in Uganda



1MWh Battery Cabinet Solution in Uganda



AWS NAT Gateways cost \$0.045/hr + \$0.045/GB processed. Learn how pricing works and 6 proven strategies to reduce NAT Gateway bill.



Our containerised energy storage system (BESS) is the perfect solution for large-scale energy storage projects. The energy storage containers can be used in the integration of various storage ...



We complete most of the installation in the factory and transport the 1MWh battery system via sea freight, ensuring safe and efficient delivery to the project site.



How much does AWS NAT Gateway cost per month? AWS NAT Gateway costs \$0.045 per hour (approximately \$32.85/month) plus \$0.045 per GB of data processed. At 10TB/month, the total cost ...



It runs 24/7 from the moment the NAT Gateway is created until it's deleted. No traffic? Doesn't matter — you're still paying \$0.045 for every hour it exists. The standard Terraform pattern ...



Complete solar and backup power solutions in Uganda, delivering reliable, cost-effective renewable energy for homes and businesses.



Flow batteries are a compelling long-term solution for Uganda's grid modernization and large-scale renewable integration due to scalability, durability, and suitability for extended discharge...



In summary, your charge will be \$0.045 for 1 GB data processed by the NAT gateway, and a charge of \$0.045 per hour will always apply once the NAT gateway is provisioned and available. The data ...



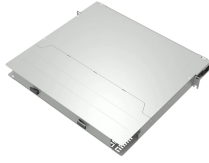
For commercial and industrial users with larger electricity power requirements per day, this 1MW battery container storage system 3MWh can effectively meet their electricity needs and help them reduce ...



When you provision a NAT gateway, you are charged for each hour that your NAT gateway is available and each gigabyte of data that it processes. For more information, see [Amazon VPC Pricing](#).



We deliver tailored solar solutions for projects of any scale, ensuring each system meets the unique requirements of both residential and commercial properties.



ESS-GRID FlexiO Series 500kW 1MWh Battery Microgrid Outdoor Upgrade to ESS-GRID FlexiO 500kW 1MWh outdoor energy storage with expandable DC and AC-side capabilities, perfect for microgrids, ...



Cable structure

For example, in us-east-1, a NAT Gateway costs \$32.85/month base + \$0.045 per GB processed. A provisioned NAT Gateway costs \$1.076-\$1.481 per Gbps-hour with FREE data ...



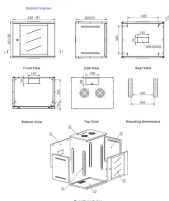
Hourly Charge (The "Existence" Fee) You pay for every hour the NAT Gateway is provisioned and available. Rate: ~\$0.045 per hour (varies slightly by region). Monthly Cost: \$0.045 * ...



Easily upgradable from 500kW to 1MW of energy storage, storing up to 3.8MWh of energy, enough to power an average 3,600 homes for one hour.



AWS NAT Gateway costs \$0.045/hour (\$32/month) plus \$0.045/GB processed. A 3-AZ setup runs \$97/month minimum. Cut NAT costs up to 70%.



AWS NAT Gateway pricing: \$0.045/hour + \$0.045/GB in us-east-1. Compare per-hour and per-GB costs across all regions including us-west-2, eu-central-1, eu-west-1, and ap-northeast-1.



The hourly charge is \$0.045 per hour per gateway — roughly \$32.40 per month just to have one running (AWS VPC Pricing). But the hourly fee is usually the smallest part of the bill.



A commercial energy storage system works by storing excess energy generated by the solar panels during the day in a battery storage system. This stored energy can then be used during times when ...



These fully containerized systems are available in 215kWh, 430kWh, and 1MWh configurations, utilizing premium LiFePO4 battery cells known for their safety and longevity.

Contact Us

For more information, pricing, or custom data center solutions, please contact us:

Website: <https://www.yoahorroenergia.es>

Email: hello@yoahorroenergia.es

Phone: +233 54 318 7269

Address: Plot 28, Spintex Road, Accra, Greater Accra, Ghana

This document is for informational purposes only. Specifications subject to change without notice.

