

## 1G Fiber Port on the Switch



## 1G Fiber Port on the Switch



Can 1G SFP optics work with 10Gb SFP+ ports on a 10Gb switch, or vice versa? This comprehensive guide reveals the intricacies of SFP and SFP+ compatibility and provides useful ...



Single-mode SFP ports use one fiber optic cable to transmit signals over long distances, while multimode SFP ports use multiple fiber optic cables to transmit signals over short distances.



In plain terms, an SFP port on a gigabit switch is the little plug-in hole that gives the switch physical flexibility — the ability to use fiber one minute and copper the next without buying a different switch.



I'm looking at the Catalyst switches, and I notice that some of them have 1Gb SFP ports and 1GB standard Ethernet ports (i.e. on the same switch).



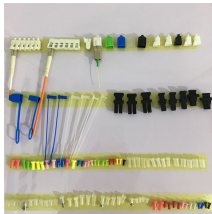
1G SFPs aren't "all the same." Media (fiber vs copper), wavelength, reach, connector, temperature grade, and even application domain (Ethernet, SONET/SDH, PON, Fibre Channel) all matter. Use ...



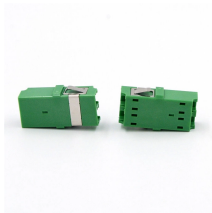
Single-mode SFP ports use one fiber optic cable to transmit signals over long distances, while multimode SFP ports use multiple fiber optic cables to ...



Fits into SFP interfaces of all Smart Switches. Fits into SFP interfaces of JGS524F. Drives Gigabit Ethernet up to 1,000 m distances with 50/125µm laser-optimized OM4 multimode fiber cables. Drives ...



Learn what a gigabit SFP module is, how it works, main types, key specifications, and common use cases to choose the right 1G SFP for your network.



SFP ports on Gigabit switches support fiber and Ethernet cables. Compare SFP ports vs. RJ45 ports, and catch up on SFP specification updates.



The answer depends on which direction you are going: Can I plug a 1G SFP into a 10G SFP+ port? Generally, Yes. Most enterprise switches (Cisco, Aruba, Juniper) allow 10G SFP+ ports ...



Can 1G SFP optics work with 10Gb SFP+ ports on a 10Gb switch, or vice versa? This comprehensive guide reveals the intricacies of SFP and SFP+ ...



An SFP port (Small Form-Factor Pluggable port) on a Gigabit switch is a dedicated slot designed to support SFP modules, enabling flexible data transmission. These ports allow Gigabit ...

## Contact Us

For more information, pricing, or custom data center solutions, please contact us:

Website: <https://www.yoahorroenergia.es>

Email: [hello@yoahorroenergia.es](mailto:hello@yoahorroenergia.es)

Phone: +233 54 318 7269

Address: Plot 28, Spintex Road, Accra, Greater Accra, Ghana

This document is for informational purposes only. Specifications subject to change without notice.

