

## 120km optical module interface



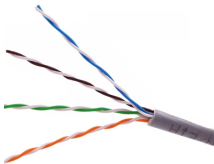




To get help and troubleshoot other Microsoft products and services, enter your problem here. Post questions, follow discussions and share your knowledge in the Outlook Community.



The high speed 10Gb/s electrical interface is fully compliant with SFI specification. The high performance 1550nm cooled CML transmitter and high sensitivity APD receiver provide superior performance for ...



Building on our recent announcement of agentic capabilities in Word, today we are introducing the Legal Agent in Microsoft Word.



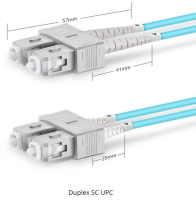
We provide modules for multi-mode and single-mode fiber up to 120Km, as well as BiDirectional WDM modules for single strand communications up to 160Km and CWDM and DWDM technology SFP ...



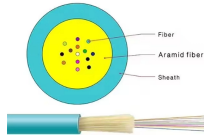
Get help and support for Microsoft Edge. Find Microsoft Edge support content, how-to articles, tutorials, and more.



Shop 1.25G SFP BIDI 120km Optical Transceiver for long-reach Gigabit Ethernet on single fiber.



The QSFP-DD ZR module supports amplified DWDM DCI transmission reach of 80km to 120km over SSMF, compliant with OIF-400ZR standard. The module also supports other fiber types, such as ...



Find out how to get support for Microsoft apps and services.



Find help and how-to articles for Windows operating systems. Get support for Windows and learn about installation, updates, privacy, security and more.



The TQ2032-TUNC-SO is a pluggable QSFP28 DWDM transceiver designed for high capacity 100 Gigabit Ethernet (100GbE) Data Center Interconnect (DCI) optical communication applications up to ...



Contact Microsoft Support. Find solutions to common problems, or get help from a support agent.



Microsoft Support is here to help you with Microsoft products. Find how-to articles, videos, and training for Microsoft Copilot, Microsoft 365, Windows 11, Surface, and more.



QSFP-DD (Quad Small Form Factor Pluggable Double Density) optical module: QSFP-DD is a new module and cage/connector system similar to current QSFP, but with an additional row of contacts ...



Compare 100G DWDM QSFP28 80km vs 120km modules. Learn differences in optical budget, power, DCM requirements, and best applications.



120km Unamplified Reach: Provides long-distance optical transmission up to 120 kilometers without the need for inline optical amplification, reducing infrastructure complexity and cost.

## Contact Us

For more information, pricing, or custom data center solutions, please contact us:

Website: <https://www.yoahorroenergia.es>

Email: [hello@yoahorroenergia.es](mailto:hello@yoahorroenergia.es)

Phone: +233 54 318 7269

Address: Plot 28, Spintex Road, Accra, Greater Accra, Ghana

This document is for informational purposes only. Specifications subject to change without notice.

